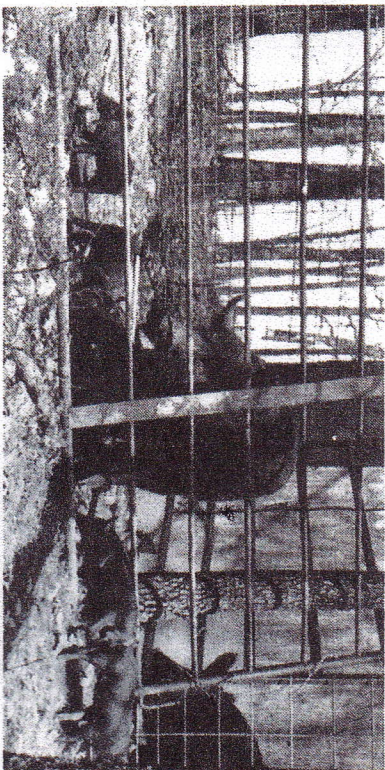
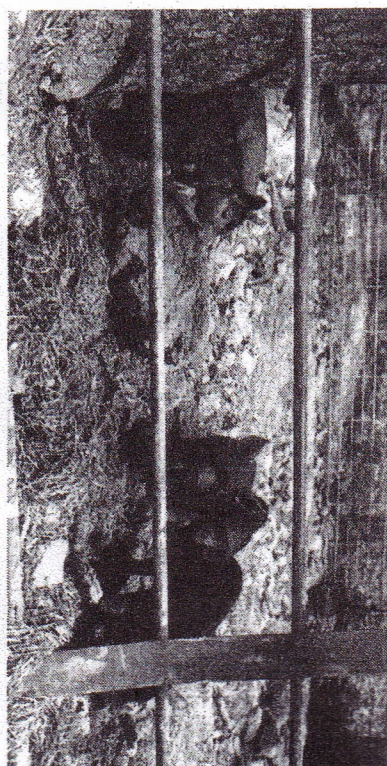


THE TIMBERLINE BLOODLINE

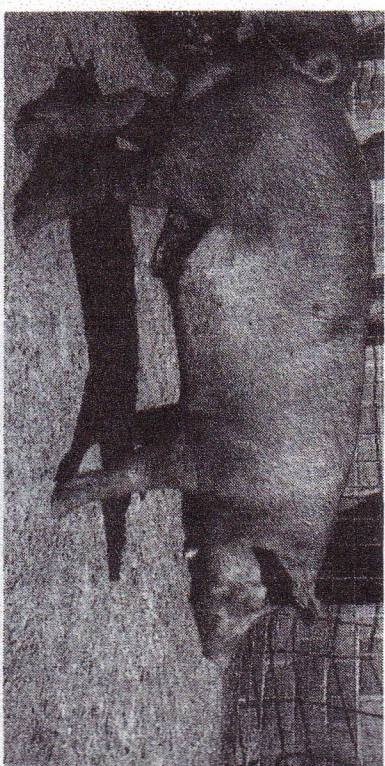
In the summer of 1983 a phone call came from a man who had seen the Endow Wattle Hog advertisement. He had some Wattle hogs that came from a man who raised them from one sow he had bought in the 1920's. These hogs were running wild with no confinement other than fence around a large acreage. The only depopulating was done by letting out contracts for \$125.00 each. This was for a gun, jeep and a permit to go out and shoot a hog and then take the head with wattles on it to mount. After this man's death the hogs were rounded up, sent to slaughter, smaller ones to sale barn, and the remainder were shot that failed to be rounded up. A small number was bought and kept by a lady that had worked on this ranch. She confined the hogs and when the old sow had farrowed, the lady picked up a pig and when the pig squealed, the lady got bit by the old sow. The lady then sold the hogs to the man who called the Endow Hog Farm. After a length of time, taking the pickup, Ruth drove Bob down in the timber area and bought the hogs. A boar called Wildman, and old sow called Timber Lady, and two other sows, Timber Gal and Timber Sue, were used to start the Timberline Wattles, also used into the Wengler bloodlines. It is the only find of Wattles reported to be found other than the ones Mr. Wengler found. These hogs had trim heads and necks, upright ears and some black speckling on the hide, just as described by the two men who had run the butcher shops years ago in Texas.



Timberline sows and pigs where we found them confined in the timber.



Timberline sows and pigs where we found them confined in the timber.



Wildman II, Timberline boar at 5 months.



Timber Lady, one of our original Timber sows, just before farrowing.